

stryker® 1588 AIM

Endoscopy

1588 AIM HD Camera System

- 1588 AIM Camera Control Unit
- 1588 AIM Camera Head
- L10 Light Source w AIM
- AIM Safelight Cable
- SDC3 Data Management Device
- IRIS Ureteral Kit
- Clarity International Kit
- VisionPro LED Monitor
- High Flow Insufflator
- AIM Laparoscope



1588 AIM Platform

1588 AIM platform offers key benefits for the hospital, clinician and patient:

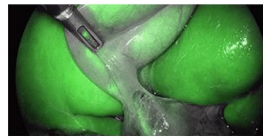


- **Standardisation:** the 1588 AIM platform is one tower that can be used in all MIS ORs. From arthroscopy to urology, this tower is designed for a best-in-class image for all surgeons.
- **Ease of use:** Settings adjustments and access to advanced imaging are all available at the touch of a button.
- **Patient safety:** L10 LED light source with Safelight Light Cable and Advanced Imaging Modalities are all designed to improve patient outcomes.
- **Customization:** Customers can create unique surgeon profiles, with customized video, insufflation, and other settings that can be activated by selecting the right user profile.

5 Advanced Imaging Modes (AIM)

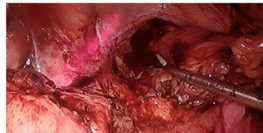
ENV Endoscopic Near-infrared Visualisation

Enables real time imaging of perfusion, blood flow and biliary mapping.



IRIS InfraRed Illumination System

Reduces the risk of ureteral damage.



DRE Dynamic Range Enhancement

Creates a brighter image in dark and posterior compartments by up to 150%.

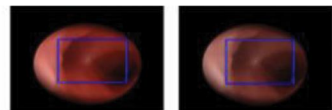


DRE OFF

DRE ON

Desaturation

Reduces color saturation in the image to the level preferable by the surgeon.



Desaturation OFF

Desaturation ON

Clarity

Enhances tissue level details and enables surgeon to see through smoke and bubbles.



1588 AIM Platform



1920x1080p native resolution

CMOS 3-Chip camera technology

9 cross-specialty settings
for optimized colour and brightness

Multiple Camera Head Options

Features & Benefits:

- **Four** camera head configurations (Standard, Inline, Pendulum, Integrated)
- 4 programmable buttons, **8 customized functions** (Choose from 19 functionalities)
- **Customizable colour settings and button function settings** per surgical specialty
- **18mm** coupler with single-handed focusing design
- **Ergonomic, lightweight** camera head design
- Intuitive touch screen LCD interface for **ease of operation**



L10 Light Source

- Enables users to visualise standard **white light, Infrared light, and Endoscopic Near Infrared** wavelengths
- **Controllable** directly from the 1588 AIM camera head
- **Adjustable light intensity** in both white light mode and in ENV mode
- Integrated **infrared lighted fibers** for ureteral detection
- Maintains strong white light output over its course of use



ENV

- Enhances visualization of anatomy in real-time during minimally invasive surgery
- Provides an enhanced visual assessment of blood flow, tissue perfusion, and biliary ducts using fluorescent light when ENV mode is activated
- Used with a fluorescent Indocyanine Green (ICG) dye



IRIS

- Activation of IRIS on the L10 Light Source trans-illuminates the ureters with an infrared lighted fiber
- U-kits enable surgeons to identify the ureters, designed to help reduce the risk of ureteral damage.
- U-kits are primarily used by Gynae (ie. hysterectomies) and Colorectal (anything left sided) surgeons in deep pelvic cases
- Patented and proprietary technology

Data Management

SDC3

The SDC3 is an innovative and intuitive data management solution for the OR. Perfect for education and teaching purposes, the SDC3 captures both images and videos in High Definition. With on-screen device status, user profiles, and HD dual channel recording, the SDC3 is perfect for capturing and managing information in the OR.



Product Features and Benefits

- Full HD recording
 - Dual Channel HD in native resolution
 - Record 1080p in MPEG/H.264, the HD video standard
 - Picture-in-picture or picture-by-picture recording
- User Profile
 - Customize user profile settings; prints per page, custom annotations, etc.
 - Icon driven user interface
 - Secure login by user
- On-screen Device Status
 - Displays status of surgical devices on all monitors: Insufflator, Shaver, Camera, Light Source, etc.
 - Tailor which devices are displayed
 - View custom surgical timeout on all monitors
- Data Management
 - Import & frontload patient data
 - Internal archive for up to 500 cases
 - Seamlessly store & edit using Studio3
 - Save to USB, CD/DVD, Blu-ray, Network, or Studio3

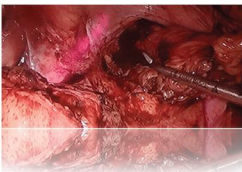
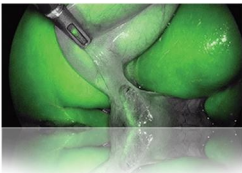
PneumoSure XL Insufflator



Features & Benefits:

- Exceptional performance with enhanced safety and reliability
- Redesigned tube set for higher actual flow
- Two additional modes for Bariatrics and Vessel harvesting
- Fully integrated color touch screen
- Real time pressure sensing for increased accuracy
- Able to maintain pneumoperitoneum under the most extreme conditions

AIM Laparoscopes



- 5.4mm & 10mm 1588 AIM laparoscopes for proprietary Endoscopic Near Infrared visualisation
- Proprietary lens technology to enable visualisation of fluorescent and near-infrared wavelengths
- Aspherical Lens Technology for minimized optical distortion
- Improved light transmission and edge brightness
- Laser welded enclosures for increased quality and durability

1588

Part Number Description

1588010000i	1588 AIM Camera Control Unit
1588020122	1588 AIM Coupler, 18mm
1588210105i	1588 AIM Camera Head C-Mount
1588310130i	1588 AIM Pendulum Camera Head
1588610122i	1588 AIM Camera w Int Coupler
1588710105i	1588 AIM Inline Camera Head
0220220300i	L10 Light Source w AIM
0233050300	AIM Safelight Cable
0220180518	IRIS Ureteral Kit
0240031020i	VisionPro LED Monitor
0233050087	Safelight AIM/Henke/Dyonics/Storz Scope Adapter
0240260000i	Clarity International Kit
0240060100i	SDC3 Base System - International Kit
0240060101i	SDC3 Voice Package Kit-International
0240060102i	SDC3 Device Control Package Kit-International
0240060103i	SDC3 Dicom Software Kit
0240060558	SDC3 EMR Connectivity Package
620040610	High Flow Insufflator
620040654	High Flow Insufflator Kit (Bottle Gas)
620040652	High Flow Insufflator Kit (House Gas)
0502937010	AIM Laparoscope 10mm 0 degree
0502937030	AIM Laparoscope 10mm 30 degree
0502537010	AIM Laparoscope 5.4mm 0 degree
0502537030	AIM Laparoscope 5.4mm 30 degree



Tel: (65) 6336 0806
Fax: (65) 6471 3233

www.easmed.com
customer@easmed.com