

Visionary.

A Legacy Redefined



1488 HD Camera System

- 1488 HD Standard Camera Head
- 1488 HD Integrated Camera/Coupler
- 1488 HD Inline Camera Head
- Ideal Eyes HD Optical Zoom Coupler
- SDC3 Data Management Device
- L9000 LED Light Source
- WiSe HD Transmission Platform
- Wingman Pneumatic Scope Holder

HD Camera Platform,

1488 Premium Functionality and Performance

The 1488 HD Camera System utilizes advanced CMOS technology and premium optics to continue the legacy of best-in-class video systems that Stryker has delivered to its customers for over 25 years. The 1488 system provides a clear bright image designed to enhance patient outcomes. Cross-specialty standardization is enabled through 9 dedicated surgical specialty settings. Designed scalable to accommodate future advancements in integration technology, the 1488 HD delivers on Stryker's promise of meeting customers' current and future needs.



1488 HD Camera System

PREMIUM OPTICS & CMOS TECHNOLOGY

- Image Brightness and Clarity
- High Noise Immunity
- Designed for Patient Safety – Enhanced light sensitivity of the 1488 allows the light source to run at lower power levels that can reduce the risk of patient/drape burns while still providing premium optical performance

CROSS-SPECIALTY STANDARDIZATION

- 9 Surgical Specialties – optimized performance to address the specific color and lighting needs of individual surgical procedures
- Stryker provides a comprehensive cross-specialty surgical solution designed to maximize the value of our customers' investment in Stryker
- Enables standardization of video systems to one platform

PLATFORM INTEGRATION

- The 1488 is designed to optimize the surgical experience for every surgeon:
 - array of camera head options specific to the needs of varying surgical specialties
 - activation of L9000 LED Light Source
 - Infravision compatibility—quick and easy identification of critical anatomy
 - Wingman Pneumatic Scope Holder Integration provides pneumatic image stability and control from the 1488 Camera Head

Multiple Camera Head Options

Surgeon Customization



Inline Camera Head

Features & Benefits:

- Customization of the surgical experience through 4 programmable camera buttons
- Activation of the L9000 LED Light Source and Wingman Scope Holder from the surgical field
- 10 button functions built scalable to increase with platform advancements
- Optical Zoom Coupler provides dynamic zoom range with no compromise in image clarity
- Infravision compatible to clearly identify critical anatomy



Integrated Camera Head/Coupler

Optical
Zoom
Coupler



Standard Camera Head

The Value of Stryker's Technology, Standardization

Maximize Investment & Performance

The 1488 HD Camera System is a cross-specialty solution designed to maximize the value of our customers' investment in Stryker. By designing both hardware and software of the products, Stryker enables better overall performance and functionality of the system through tighter integration of each component in the platform.

Because of this integration, Stryker continues to advance the capabilities of the entire portfolio of Stryker products. Beyond just a video platform, Stryker provides a comprehensive cross-specialty surgical solution for customers.



Cross-Specialty

Standardization



The 1488 HD Camera System provides optimized color and light in different anatomical environments

Customer Value Proposition

Safety, Service, and Sustainability

Features & Benefits:

SAFETY—PATIENTS & CAREGIVERS

- Designed for Patient Safety – Enhanced light sensitivity of the 1488 allows the light source to run at lower power levels that can reduce the risk of patient/drape burns while still providing premium optical performance
- Infravision Compatibility – Designed for clear identification and land-marking of critical anatomy (ureters and esophagus)
 - Clinical/Patient Application
 - Surgeon Education

SERVICE—SURGEON & STAFF ENGAGEMENT

- Brightness and noise reduction provide excellent clarity and precision
- Wingman Pneumatic Scope Holder Control
 - Provides pneumatic image stability and control from the 1488 Camera Head
- Customization:
 - Designed specifically to optimize the color and light settings to meet the varying needs of different surgical specialties
 - Programmable buttons allow for customization of user experience and control from within the surgical field, freeing nurses to focus on patient care and other required tasks
- Optical Zoom Coupler—Dynamic optical zoom range with no compromise in image clarity

SUSTAINABILITY—OPERATIONAL, FINANCIAL, ENVIRONMENTAL

- Enables potential efficiencies in:
 - Operating procedures
 - Surgeon and OR staff training and education
 - Total cost of ownership
 - Inventory management and purchasing
- Camera head options enable standardization of video systems without compromising the ability to customize to a surgeon's preferences based on their specialty or need
- Scalable platform accommodates future advancements, functionality, peripheral integration and control



Safety & Performance,

LED Technology in the OR

L9000 LED Light Source

An eco-friendly and cost-savings OR device, the L9000 LED Light Source reduces the environmental waste by eliminating the need to change the LED light bulb. Designed for increased patient safety, the Safelight technology within this light source provides a cooler light emission during procedures. As an added benefit, the Safelight technology ensures that the light source goes into standby mode when the light cable detaches from the Safelight, preventing potential injury to the patient and providing added protection in the OR.

Features & Benefits:

- Simpler user interface with LCD touch screen
- Control from the 1288 and 1488 camera head
- Reduced lifetime ownership cost
- Designed for increased patient safety



Give Yourself

A Hand

Wingman Pneumatic Scope Holder Control

1488 and Wingman Integration enables surgeon control over image stability and the freedom to use both hands to operate surgical instrumentation.

- Provides Pneumatic image stability
- Can be controlled by the 1488 HD Camera Head
- Holds any 5mm or 10mm endoscope and camera
- Decrease surgeon fatigue
- Free staff to focus on critical operating room tasks



Innovative & Intuitive

Data Management

SDC3

The SDC3 is an innovative and intuitive data management solution for the OR. Perfect for education and teaching purposes, the SDC3 captures both images and videos in High Definition. With on-screen device status, user profiles, and HD dual channel recording, the SDC3 is perfect for capturing and managing information in the OR.

Features & Benefits:

- Dual channel 1080p recording
- Customizable User Profiles
- On-Screen Device Status
- Customizable Surgical Timeout
- Internally Archives past 500 cases



Multi-Cast Wirelesss HD, Video Transmission

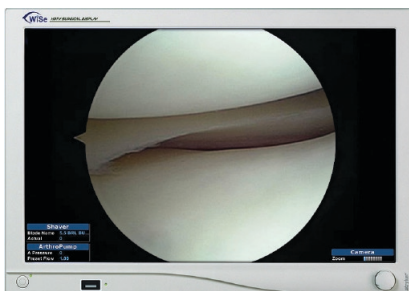
WiSe™ HDTV Transmitter

The WiSe HD Transmitter is the core of Stryker's ground breaking wireless 1080p video transmission platform. Combined with the WiSe HDTV Flat Panel Monitor, uncompressed 1080p video signals can be displayed wirelessly virtually anywhere within the OR. Each WiSe HD Transmitter can securely transmit to up to 3 WiSe HDTV Surgical Displays or WiSe Receivers, drastically increasing freedom and flexibility in the OR.



Features & Benefits:

- Wireless 1080p resolution
- Simple linking system
- Secure multicast transmission
- Increased visualization freedom



Joint Replacements

Trauma, Extremities & Deformities

Craniomaxillofacial

Spine

Biologics

Surgical Products

Neuro & ENT

Interventional Spine

Navigation

Endoscopy

Communications

Patient Handling Equipment

EMS Equipment

Stryker Endoscopy
5900 Optical Court
San Jose, CA 95138
t: 1 800 624 4422

www.stryker.com

The information presented in this brochure is intended to demonstrate a Stryker product. Always refer to the package insert, product label and/or user instructions before using any Stryker product. Products may not be available in all markets. Product availability is subject to the regulatory or medical practices that govern individual markets. Please contact your Stryker representative if you have questions about the availability of Stryker products in your area.

Products referenced with [™] designation are trademarks of Stryker.
Products referenced with [®] designation are registered trademarks of Stryker.

Literature Number: **1000900939 (Rev. A)**
VID/FWG 2.5k 05/12

Copyright © 2012 Stryker
Printed in USA